

GRADE 2 - OPTION A

Telephone: **01322 518830**
 Fax: **01322 524017**
 Email: *info@tritonsystems.co.uk*
 Web: *www.tritonsystems.co.uk*

THIS DRAWING IS THE PROPERTY OF TRITON SYSTEMS AND MUST NOT
 BE LOANED OR COPIED WITHOUT PRIOR WRITTEN CONSENT

© 2011 TRITON SYSTEMS

NOTES:

ALL INSTALLATION TO BE CARRIED OUT IN STRICT ACCORDANCE WITH
 MANUFACTURERS INSTALLATION INSTRUCTIONS. FOR FURTHER
 ASSISTANCE CONTACT **TRITON TECHNICAL** ON THE TELEPHONE
 NUMBER ABOVE.

WATERPROOFING DETAILS MAY VARY ACCORDING TO SITE/GROUND
 CONDITIONS.

FOR WATERPROOFING DETAILS CONTACT; **TRITON TECHNICAL**

FOR STEEL PILING DETAILS CONTACT; **SHEET PILING (UK) LTD**

2	JDF/KD	06/12/10		
REV.	MOD. BY	DATE	CHK. BY	APP. BY

Alterations

TITLE:

Steel Intensive Basements
 Type A - Floors & Capping Beam
 Type B - Walls
 Grades 2 - BS 8102 (2009)
 Typical Section

DRG. No.

SIB060.1

REV

3

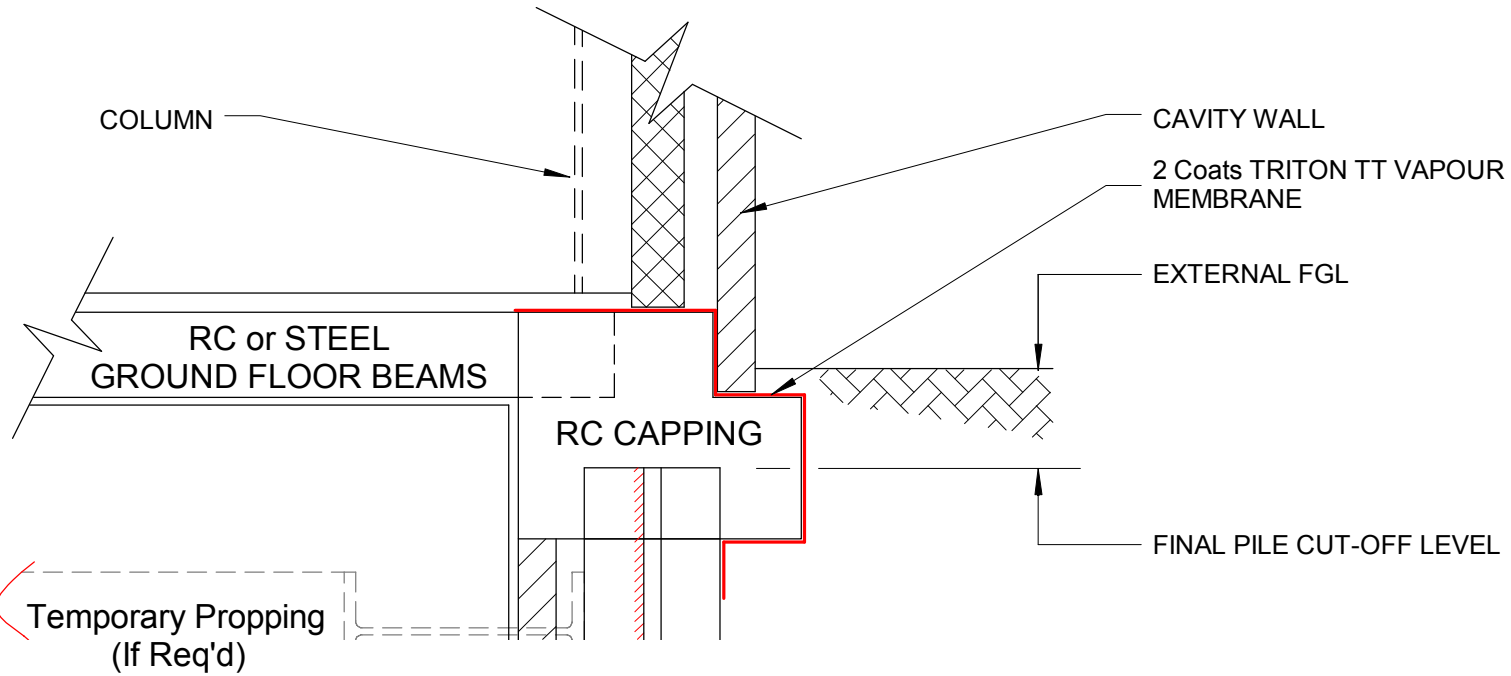
DRAWN	JDF, CBS	System Files: SIB060-1(3).pdf SIB060-1(3).dwg
DATE	16th Sept 2010	
SCALE (A3)	1 : 20 @ A3	
CHECKED		
APPROVED		

S

4)

AB

UPON
 RTICAL
)



OUR

The logo for Triton Systems, featuring the word "TRITON" in a bold, red, italicized sans-serif font. The letter "O" is replaced by a white circle with a red outline. A small red circle is positioned above the letter "I".

www.tritonsystems.co.uk

In Association With

The logo for Sheet Piling (UK) Ltd, consisting of a stylized red and blue triangle on the left and the text "SHEET PILING (UK) LTD" in white, bold, sans-serif font on a blue rectangular background.

Triton Systems

Units 3 - 5 Crayford Commercial Centre
Greyhound Way, Crayford, Kent. DA1 4HF

Telephone: **01322 318830**

TEL