



Recent Project References

As at January 2011

TRITON TT SUPER ADMIX WATERTIGHT CONCRETE SYSTEM

Triton's Watertight Concrete System incorporates TT Super Admix to concrete and TT Waterstop and TT Swellmastic to all construction joints.

1. Goldsmiths, University of London:

New build extension and basement for use as lecture theatres, photo studios and storage.
Main contractor – Willmott Dixon. Sub Contractor – City Basements.
Concrete supplier – Hansons.
900m³ watertight concrete, 500m construction joints.



2. West Heath Road, London:

New build underground car park.
Contractor – Togher Construction Ltd.
Concrete supplier – Procon.
500m³ watertight concrete. 300m Construction joints.



3. Harley Road, London:

New build basement – habitable accommodation.
Main contractor – Poundbourne Construction Ltd.
Concrete supplier – Procon.
250m³ watertight concrete, 150m construction joints.



4. Sheldon Avenue, London:

New build basement – habitable accommodation.
Contractor – Oliver Connell Construction Ltd.
Concrete Supplier – Procon.
500m³ watertight concrete, 200m construction joints.



5. Berkshire new build:

New build/retrofit basement – habitable accommodation.
Main Contractor – Boshers Ltd. Sub contractor – City Basements.
Concrete supplier – Tarmac.
350m³ watertight concrete, 250m construction joints.



6. Grey Coat Hospital School, London:

New build basement extension.
Main contractor – Bouygues UK Ltd. Sub contractor – City Basements.
Concrete supplier – Hansons.
165m³ watertight concrete, 100m construction joints.



7. Grange Road, London:

New build basement – habitable accommodation.
Main Contractor – Togher Construction.
Concrete supplier – Procon.
200m³ watertight concrete, 150m construction joints.



8. Markyate, Bedfordshire:

New build house/basement.
Main contractor – Toureen Mangan/City Basements.
Concrete supplier – B P Mitchell Ltd.
200m³ watertight concrete, 175m construction joints.



TRITON/ISOLA PLATON CAVITY DRAIN SYSTEMS

The Triton/Isola Platon cavity drain system incorporates Isola Platon membranes and Triton's drainage channels and pump systems. Together they provide a complete Type C drained protection system in accordance with BS 8102 (2009).

1. Patrick Street, Cork:

New build basement for retail department store.
Main contractor – Bowens Group. Sub Contractor – TCS Cork.
1200m² Platon Multi membranes, 380m Triton Aquachannel.
TOTAL = 1200m²



2. Half Moon Street, Cork:

New build basement for offices and retail.
Main contractor – Bowens Group. Sub contractor – TCS Cork.
3000m² Anti Lime Coating, 3000m² Platon P20 membrane, 1600m² Platon Multi membrane.
TOTAL = 4600m²



3. Jurys Hotel, Cork:

New build basement for offices and car park.
Contractor – TCS Cork.
750m² Platon P20 and 500m² Platon Multi membranes. 50m Triton Aquachannel.
TOTAL = 1250m²



4. Goldsmiths, University of London:

New build basement for use as lecture theatres and studios.
Main contractor – Willmott Dixon Ltd. Sub contractor – City Basements.
1800m² Platon P20 and 900m² Platon Multi membranes. 200m Triton Aquachannel.
TOTAL = 2700m²



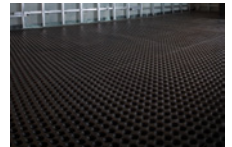
7. Avenue Road, London:

New build multi level basement for habitable accommodation.
Main contractor – Blenheim House Construction Ltd. Sub contractor – MGA Contracts Ltd.
800m² Platon P20 and 1400m² Platon Multi membranes. 400m Aquachannel.
TOTAL = 2200m²



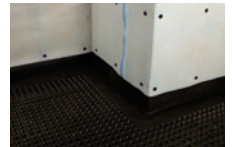
8. Bristol City Shopping Centre:

New build shopping/retail centre.
Contractor – UK Screeders Ltd.
15,000m² Platon P20 membrane.
TOTAL = 15,000m²



9. Berkshire new build:

New build/retrofit basement for habitable use.
Main contractor - Boshers Ltd. Sub contractor – MGA Contracts Ltd.
400m² Platon P20 and 500m² Platon Multi membranes. 250m Aquachannel.
TOTAL = 900m²



10. Grey Coats Hospital School, London:

New build extension.
Main contractor – Bouygues UK Ltd. Sub contractor – City Basements Ltd.
450m² Platon P20 and 200m² Platon Multi membranes. 130m Aquachannel.
TOTAL = 650m²



11. Theberton Street, London:

New build/retrofit basement to provide habitable and restaurant space.
Contractor – Toureen Mangan/City Basements Ltd.
350m² Platon P20 and 400m² Platon Multi membranes. 120m² Platon Plasterbase membrane.
TOTAL = 870m²



ADDITIONAL REFERENCES – ISOLA PLATON MEMBRANES GREEN ROOFS, WATERPROOFING, DAMPPROOFING

1. Warwick warehouse:

Refurbishment of industrial unit to high spec offices. Floor heavily contaminated with industrial oils.
1200m² Platon Multi membrane



2. Historic House:

New build/retrofit basement/subterranean rooms: Habitable accommodation.
Main contractor – 800 Group Ltd.
150m Waterstop. 700m² Platon membrane. 100m Aquachannel.
700m² TT Vapour Membrane to swimming pool and green roof.



3. NAP, Cheltenham:

Green Roof.
Contractor – Frosts Landscapes.
2500m² Platon DE25 drainage membrane.



4. Madrid Airport:

Green roof.
60,000m² Platon DE25 drainage membrane.



PROJECT REFERENCES – LIQUID APPLIED WATERPROOFING/DAMPPROOFING/GAS BARRIERS

1. Bethnal Green Town Hall, London:

Refurbishment of existing basement floor.
Contractor – Ward Damp.
2000m² Triton TT Vapour membrane.



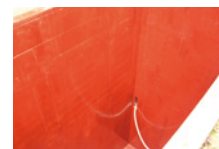
2. West Heath Road, London:

Below ground level/earth retaining walkways at new build development.
400m² Triton TT Vapour Membrane.



3. Avenue Road, London:

New build multi level basement – car lifts, lift pits, swimming pool, roof decks and green roofs.
600m² Triton TT Vapour Membrane. 450m² Triton Triseal epoxy system.



4. Eastlands Stadium, Manchester:

Ground slab dpm and gas barrier.
400m² Triton TT Vapour Membrane.



5. Goldsmiths, University of London.

New build basement extension – podium/paved decks.
Main contractor – Willmott Dixon Ltd. Sub contractor – City Basements Ltd.
500m² Triton TT Vapour membrane.



Triton Contact Details:

Tel: 020 8310 3929 Fax: 020 8312 0349 Email: info@triton-chemicals.com

www.triton-chemicals.com