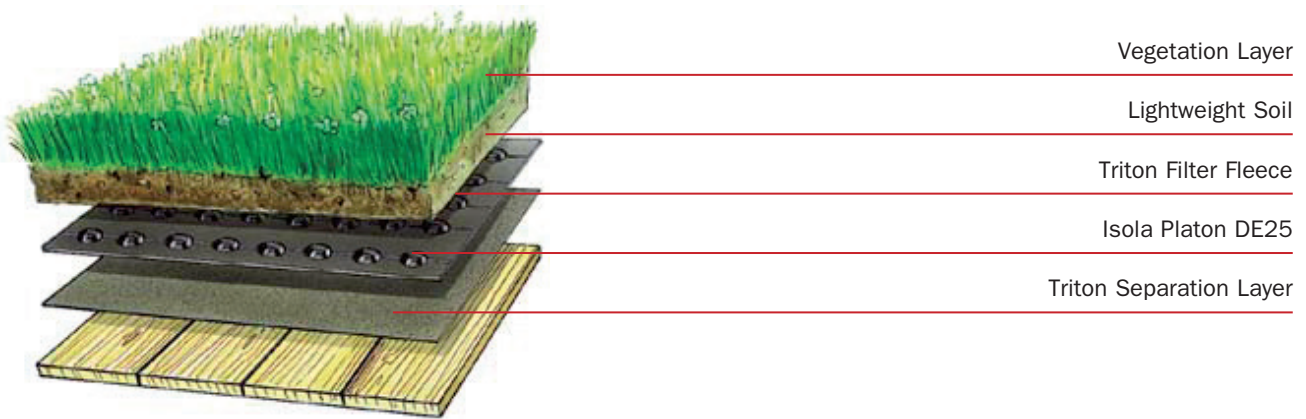




Triton filter and separation layers for extensive green roofs

Introduction

As part of Triton's green roof system, which incorporates the use of Isola Platon DE25 Drainage & Reservoir Membrane and a primary waterproofing element such as Triton TT Vapour Membrane, Triton also supplies two non-woven geotextile fabric layers – a filter fleece layer and a separation (root barrier) layer.



1. Triton Filter Fleece

A polypropylene, non-woven, mesh fabric which is designed to allow the excess rainwater to filter through, whilst retaining the growing medium/roof soil in its desired location.

Technical Data

Weight:	110g/m ² nominal
Fabric:	Polypropylene
Colour:	White
Roll width:	2m
Roll length:	20m
Total area:	40m ²

2. Triton Separation Layer

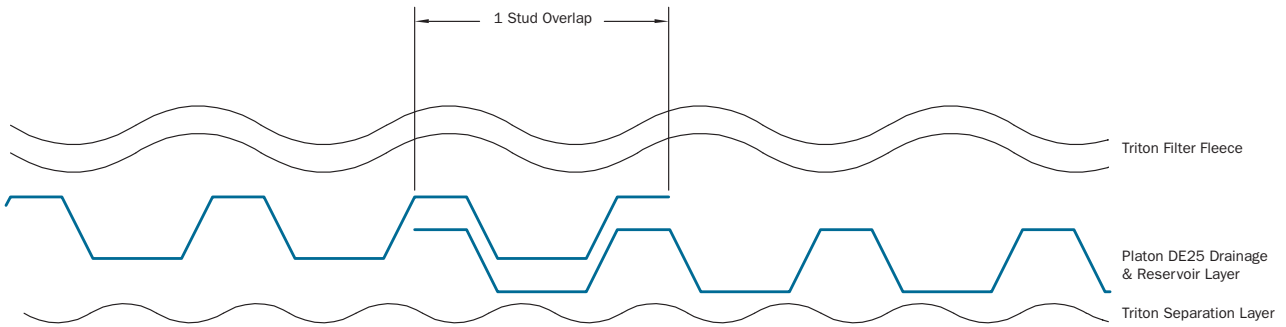
A mix blended, polypropylene, non-woven fabric designed specifically to resist root penetration from extensive green roofs, such as Sedum or turf. It ensures the protection of the underlying layers of the roof build up from root penetration.

Technical Data

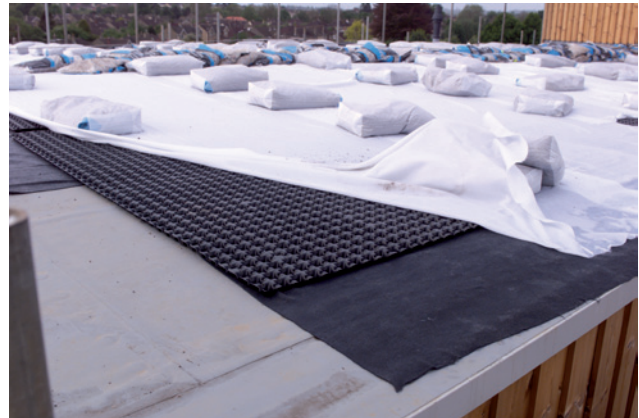
Weight:	250-300g/m ² nominal
Fabric:	Recycled synthetic
Colour:	Black
Roll width:	2m
Roll length:	25m
Total area:	50m ²



Triton technical detail drawing no. GR002.1



Sedum roof



Sedum roof under construction showing Triton Filter Fleece (white), Platon DE25 (studded membrane) and Triton Separation Layer (Black)

Triton Contact Details:

Triton Systems
Units 3 – 5 Crayford Commercial Centre, Greyhound Way, Crayford, Kent DA1 4HF

Tel: 01322 318830
Fax: 01322 524017
Email: info@tritonsystems.co.uk

www.tritonsystems.co.uk