



Waterproofing Products



TRI-SEAL

A solvent free, two part epoxy resin coating, typically used as a surface damp proof membrane and a water vapour suppressant.

Well suited for use as a water and water vapour proof barrier, beneath raised access floors, in plant rooms and banded areas. It is also suitable for application on damp surfaces, such as sand/cement and concrete floors subject to rising damp or containing residual construction moisture.

Properties:

- Solvent free
- Low Odour
- Waterproof
- Flexible
- Tough
- Resistant to osmotic blistering
- Water vapour transmission rate less than $4\text{g/m}^2/24\text{ hr}$ (400 microns film thickness)



Typical Uses:

- As a DPM at ground level to prevent rising damp through floors or to contain residual construction moisture
- On concrete slabs and banded areas or beneath raised access floors
 - a. Beneath raised access floors Tri-Seal is used to prevent water or moisture tracking downwards. This is to protect sensitive areas below or to the side. Pedestals are adhered to the surface of the membrane
 - b. As a banded floor finish in areas that have drainage outlets or to contain moisture for short periods of time until it can be pumped away
- For fast track projects or situations where moisture sensitive finishes are to be installed, i.e. timber floors
- As a floor finish in plant rooms
- As a general purpose coating for surfaces subject to foot and light wheeled traffic
- As a vapour barrier applied internally, for example, to waterproof concrete to attain a Grade 4 basement, as described in BS 8102

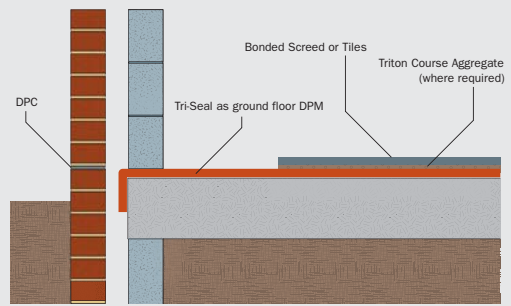
Note:

Tri-Seal can be screeded over. It is also possible to “blind” the membrane with Triton Course Aggregate as a key for renders, bonded screeds and tiles or with Triton Fine Aggregate to provide a slip resistant finish.

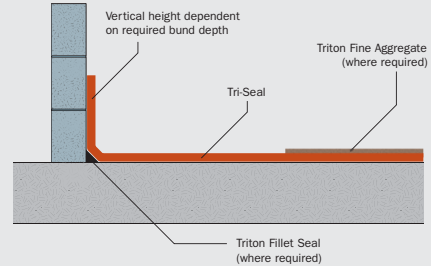
Tri-Seal is suitable for areas on the negative side of construction only where it will not be subjected to positive hydrostatic pressure.

TYPICAL DETAILS

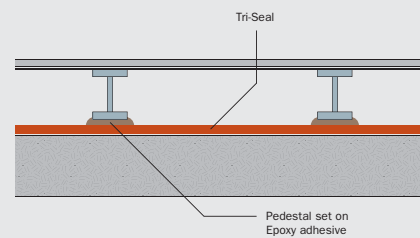
1. DPM to ground floor slab
2. Banded areas, plant room floors
3. Raised access floor
4. Raised access floor, internal wall
5. Raised access floor, banded area
6. Raised access floor, showing seal to metal



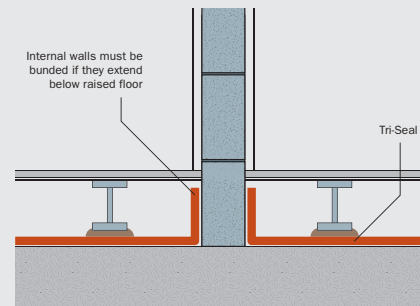
1. DPM TO GROUND FLOOR SLAB



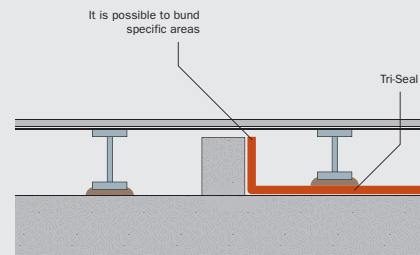
2. PLANT ROOM BUNDED AREA



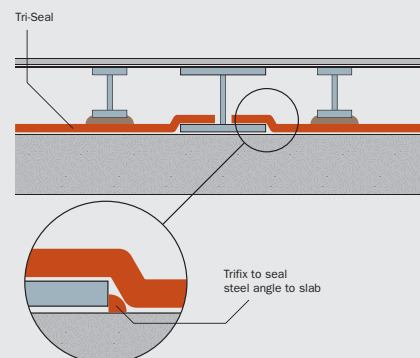
3. RAISED ACCESS FLOOR



4. RAISED ACCESS FLOOR - INTERNAL WALL



5. RAISED ACCESS FLOOR - BUNDED AREA



6. RAISED ACCESS FLOOR, SHOWING SEAL TO METAL

Specification:

In accordance with NBS Specification – J30 – Liquid Applied Tanking/Damp Proofing. Please contact Triton's Technical Department for more information.

Composition:

Part 1: Low viscosity epoxy resin, reactive diluents, flow promoters and oxide red pigment.

Part 2: Low viscosity epoxy curing agent and accelerator.

Preparation:

All surfaces must be clean, sound and free from oil, grease, frost and other contamination. The substrate should be as smooth as possible with any hollows or voids being made good to a flush finish with suitable filler. Any sharp protrusions should be eliminated and edges rounded if possible. All loose, friable or flaking surfaces should be removed by suitable means.

Mixing:

Empty the entire contents of the hardener pack (Part 2) into the resin pack (Part 1) ensuring that the container sides and bottom are scraped thoroughly. Using a spatula or (preferably) a mixing paddle fixed into a slow speed drill, mix the two components together for at least two minutes. Scrape down the sides of the container and mix again for another minute. Use the mixed product immediately.

NOTE: In cold conditions (5 – 10°C) the viscosity of the two components will increase, to reduce viscosity and cure time, store the product in a warm environment for at least 6 hours before use.

Application:

Once thoroughly mixed, Tri-Seal should be poured out on to the floor and spread as evenly as possible using a brush or medium pile paint roller. Do not overspread the product. Apply a minimum of two coats to achieve a total film thickness of 400 microns. Re-coat times will vary according to substrate and air temperatures. Do not apply at temperatures below 5°C or falling towards that temperature. At 20°C the poured out product has a working time of approximately 45 minutes, do not leave the mixed product in the original container, as this will reduce the pot life.

NOTE: To be effective, the coating must be free from thin spots or pinholes.

Coverage:

1st Coat: 3 – 4 m²/kg @ 200 microns film thickness.

2nd Coat: 4 – 5 m²/kg @ 200 microns film thickness.

NOTE: The coverage figures given are based on application to a smooth, dense surface. The coverage obtained will vary according to the porosity and texture of the surface. Moisture vapour suppression is maximised when the total coating thickness is 400 microns or over.

Curing Time:

Recoat in 6 – 8 hours, touch dry in 4 – 6 hours, full cure in 7 days. (All cure times given are for 20°C and average humidity).

Safety Precautions:

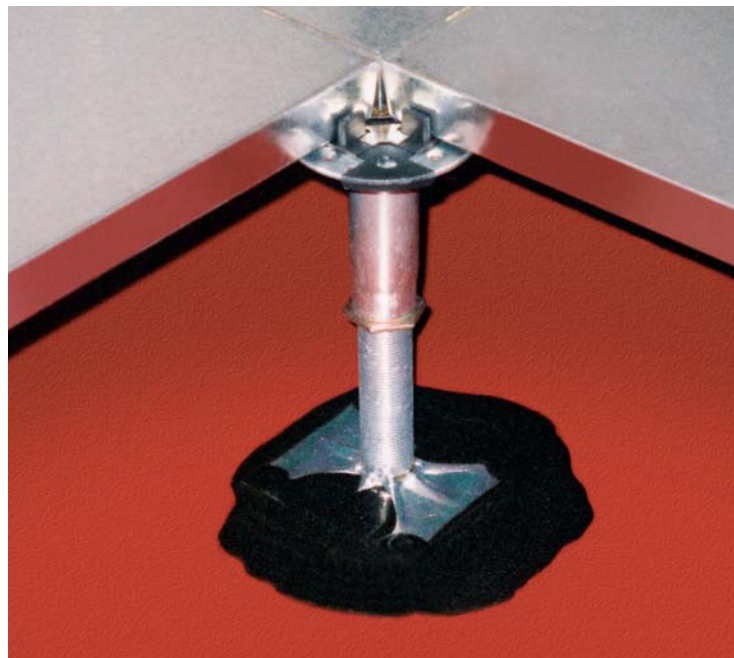
- Avoid skin contact – see separate safety data sheet.
- Only mix whole packs, as mix ratios are critical.
- Tri-Seal will not bridge construction joints or large or mobile cracks.
- Usage at temperatures above 25°C will result in a very short pot life; in such instances keep product cool before use.
- Insufficient mixing of resin and hardener packs together will result in poor performance.

Availability:

Direct from Triton in 5kg and 20kg packs.

Storage:

Unopened containers must be kept in dry conditions, not below 5°C. Shelf life – 12 months.



Associated Products:

TRIFIX

Any unavoidable puncturing of the Tri-Seal can be sealed with Trifix, a two part epoxy resin sealant. Trifix can also be used where the bund is provided by metal angles.

Application:

Prior to application, all surfaces must be sound and free from dust, oil, rust and grease. Trifix is supplied in cartridge form and is mixed in a static spiral mixer which delivers the mixed product to the surface. Trifix should be extruded prior to use until a consistent non-streaky colour is achieved.

Curing:

Complete cure – 7 days

Properties (after curing for 21 days at 20°C):

Tensile Strength – 35 Mpa

ISO/R 527

Flexural Strength – 30 Mpa

ISO 178

Compressive Strength – 60 Mpa

Availability:

400ml side by side cartridge

Safety Precautions:

Wear gloves and eye protection.

Wash hands and exposed skin after use.

TRITON AGGREGATE

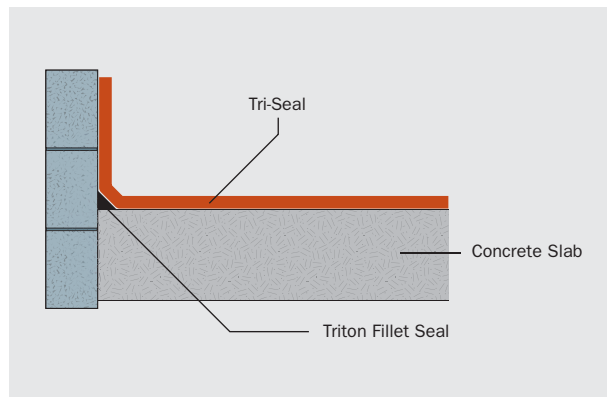
Course Aggregate – used to provide a key for renders, bonded screeds and tile bedding.

Fine Aggregate – used to provide a slip resistant finish.

FULL PRODUCT SAFETY INFORMATION SHEETS ARE AVAILABLE FROM TRITON

TRITON FILLET SEAL

If Tri-Seal is used in banded situations, any wall/floor angles or corners can be reinforced with Triton Fillet Seal, a pre-packed cement based and polymer modified product. Tri-Seal can then be applied over the fillet to provide a seamless waterproof barrier.



Application:

Mix Fillet Seal with sufficient clean water to make a cohesive, stiff mortar. Ideally it should be applied to partly cured (green) slurry coating surfaces to maximise adhesion. Only sound substrates suitable to be permanently sealed under a waterproofing system should be treated.

Curing:

Avoid rapid drying out, overcoat as soon as set (5 – 6 hours dependent upon conditions) whenever possible. Do not subject to running water until fully hardened (and overcoated).

Coverage:

15 – 20 linear metres (25mm x 25mm triangular fillet) per 25kg approximately.

Availability:

25kg bags.

Safety Precautions:

Avoid breathing dust

Wear gloves and eye protection

Wash hands and exposed skin after use



Triton Chemical Manufacturing Co. Ltd.

Unit 5, Lydean Industrial Estate, Abbeywood, London SE2 9SG

Tel: 020 8310 3929 Fax: 020 8312 0349 Email: info@triton-chemicals.com

www.triton-chemicals.com