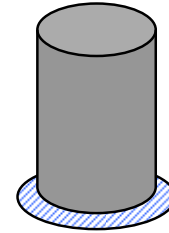


VERTICAL SERVICE ENTRY THROUGH FLOOR DETAIL

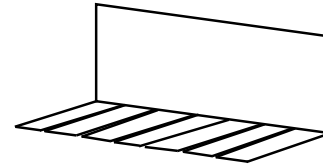
STAGE 1

Clean base of service entry then wrap Platon Sealing Rope around base of service entry. **NB:** If floor conditions are wet then Triton Epoxy Putty can be used.



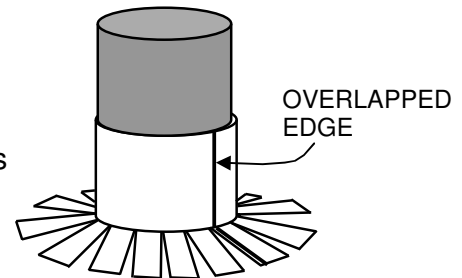
STAGE 2

Cut Wall/floor junction material with scissors in segments of 25mm wide up to the centre fold to create a cloak.



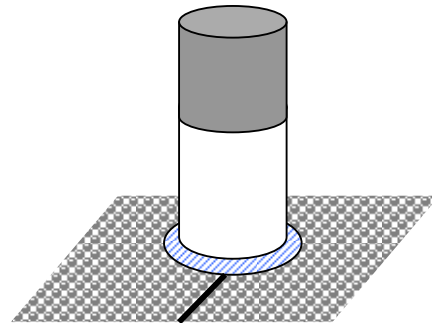
STAGE 3

Wrap Wall/Floor junction 'cloak' round entry pipe and press down into Sealing Rope. The overlapping edge is sealed with Sealing Tape.



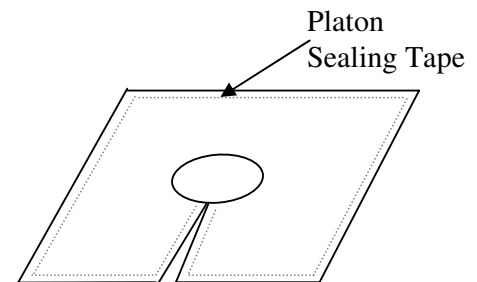
STAGE 4

Lay Platon Floor membrane cutting the membrane around the profile of the service entry and wrap another rope seal at the base between the floor membrane and vertical section of Wall/floor junction.



STAGE 5

Cut a 300mm (min) square piece of Platon DPC plain and cut out a hole the size of the service entry. Using scissors cut from one edge of the DPC Plain to the centre hole. Apply Platon Sealing Tape around all edges including the cut section.



STAGE 6

Fit Platon DPC Plain around service entry and seal to floor membrane by pressing down on sealing tape.

