



Case Study

DECEMBER 2010

Triton supplied:

Platon Multi (210 M), TT Vapour Membrane, Platon P20 Membrane (3000 M²)



The Halfmoon Street development in Cork is located just ten metres from the river

TRITON SYSTEMS SPECIFIED IN MAJOR RETAIL DEVELOPMENTS

Waterproofing systems from Triton have been specified and installed at a major Cork City development by Triton Conservation Systems, contracted to Bowens Construction.

The depth of the basement, the high water table and the close proximity of the River Lee (10 metres away) led to a combination of waterproofing systems being specified in view of the intended use of the structure (retail and office space). The combination system (as defined by BS 8102: 2009) comprised a structurally integral type B system (welded sheet piling) on the walls; a drained type C system to walls and floors (a complete internal cavity drain membrane system); and a barrier type A membrane beneath the floor slab.



Triton's TT Waterstop and TT Swellmastic to construction joint detailing

The cavity drain membrane system comprised 210 linear metres of Platon Multi cavity drain membrane to the 5M walls of the new basement and 3,000 square metres of Platon P20 deeper studded cavity drain membrane laid to the floor. Triton TT Vapour Membrane was applied to the concrete slab below the P20 to prevent calcification.

The Platon Multi was fixed to the sheet piling walls using an ITW nail gun with depth sensor shot, firing steel pins to a maximum depth of 8mm in to the 12mm sheet piling. No Aqua Channel drainage conduit was installed here, however drainage gullies were cast in to the top of the slab leading to suitable discharge points.

Cavity drain membranes provide an alternative to conventional cementitious tanking systems - which work by holding the water back. Cavity drain membranes work on the principle of allowing water to continue to penetrate the structure but control it in the air gap and divert it to a suitable drainage point.

TT Vapour Membrane is a ready blended coating that once cured, provides a waterproof Methane and Carbon Dioxide barrier.

**John Banford, Triton Ireland
Building Protection Ltd
Tel: +28 9264 8870**

**Triton Conservation Systems
00 353 (0)214504201
www.tritonconservationsystems.com**

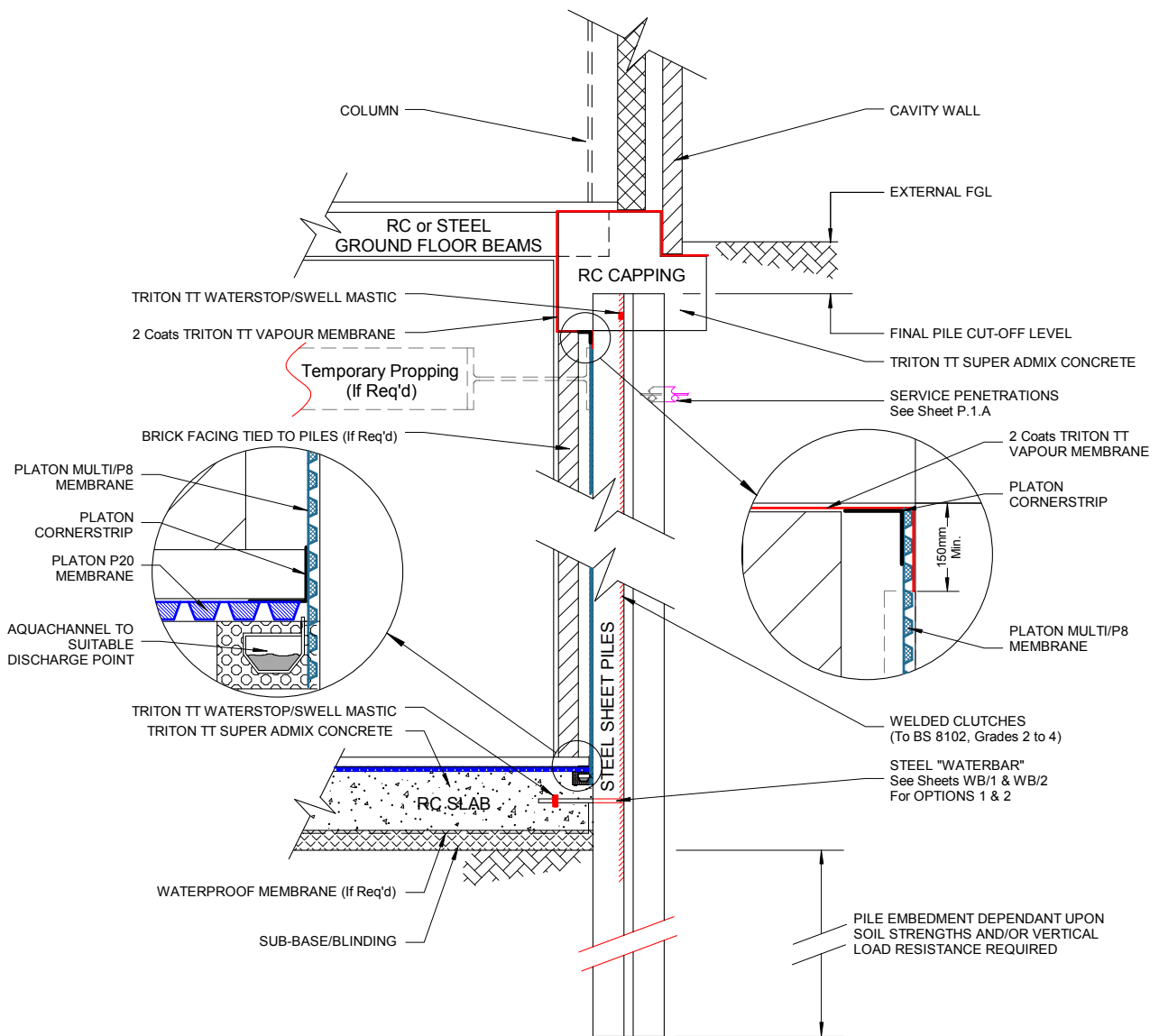
**Sheet piling supplied by Sheet Piling UK
Tel 01772 79 41 41
www.sheetpilinguk.com**



Platon Multi was first fixed to the sheet piling walls



3000 m² of heavy duty Platon P20 was then laid to the floor



Triton Chemical Manufacturing Co. Ltd.
 Unit 5, Lyndean Industrial Estate, Abbey Wood, London SE2 9SG

Tel: 020 8310 3929
 Fax: 020 8312 0349
 Email: info@triton-chemicals.com

www.triton-chemicals.com